

DERBY

10.138805 D
17.2.1997

D

*TV*TL

HOLSTEIN

DESIGN 10.503529 D

AEROSTAR

BLACKSTAR 1929410 USA

ATA 1012099861 D

5 305 11559 4.20 486 3.36 388 EX 90

ATENA 1002357489 D

5 305 11516 4.15 478 3.26 375 EX 90

Milch kg Milk kg	Fett kg Fat kg	Fett % Fat %	Eiweiß kg Protein kg	Eiweiß % Protein %	Basis Base	Töchter Daughters
+1134	+41	-0.08	+37	-0.01	D	248
7350 (1.)	309	4.20	247	3.36	D	248

-3s -2 -1 0 +1 +2 +3s

GESAMTZUCHTWERT RZM						123	TOTAL INDEX
						113	INDEX MILK
EXTERIEUR							TYPE
GRÖSSE						130	SIZE
FUNDAMENT						121	FEET & LEGS
EUTER						126	UDDER
						111	
FRUCHTBARKEIT			96				FERTILITY
KALBEVERLAUF			97				CALVING

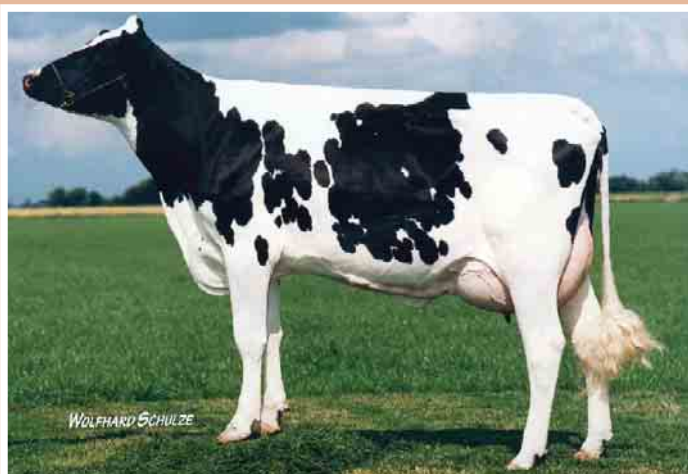


EXTERIEUR

TYPE

NUTZUNGSDAUER 113 LONGEVITY

INTERNATIONALER TOP BULLE
INTERNATIONAL TOP BULL



TOCHTER

AGRIA G+ 84

DAUGHTER



TOCHTER

EDELROSE VG 86

DAUGHTER